

SITE CODE:

MZ

SU N°:

17219 Plan 2

MARZUOLO  
ARCHAEOLOGICAL  
PROJECT

AREA N°:

17000



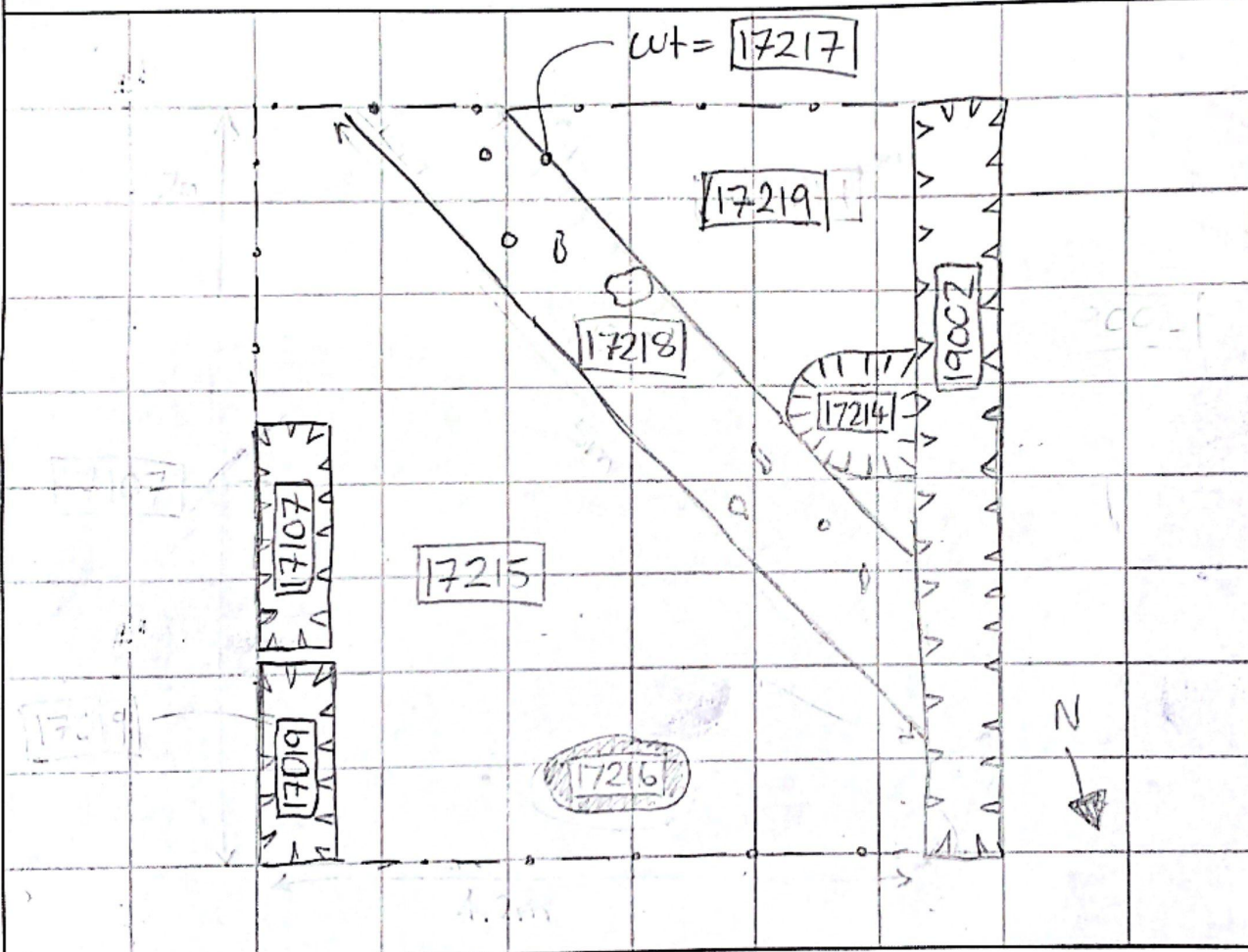
Date: 15th July 2022

Initials: LN

Definition: possible surface outside room

**Sketch of Plan:** Include: 1. north arrow; 2. dimensions; 3. location of samples (if taken); 4. trench pts (if visible in plan); 5. slope (if relevant); 6. abutting architecture/adjacent or relevant features for reference; 7. numbers of all SUs visible in plan

Scale: 1sq =



Notes: — We did not excavate 17219 to any depth, but surface inspection with a trowel reveals that it is very similar to 17215, and the two SUs may once have formed a joined surface prior to being cut by 17217

Date Updated to Database:

Initial: