

SITE CODE:

MZ

SU N°:

17218 Plan 2

MARZUOLO
ARCHAEOLOGICAL
PROJECT



AREA N°:

17000

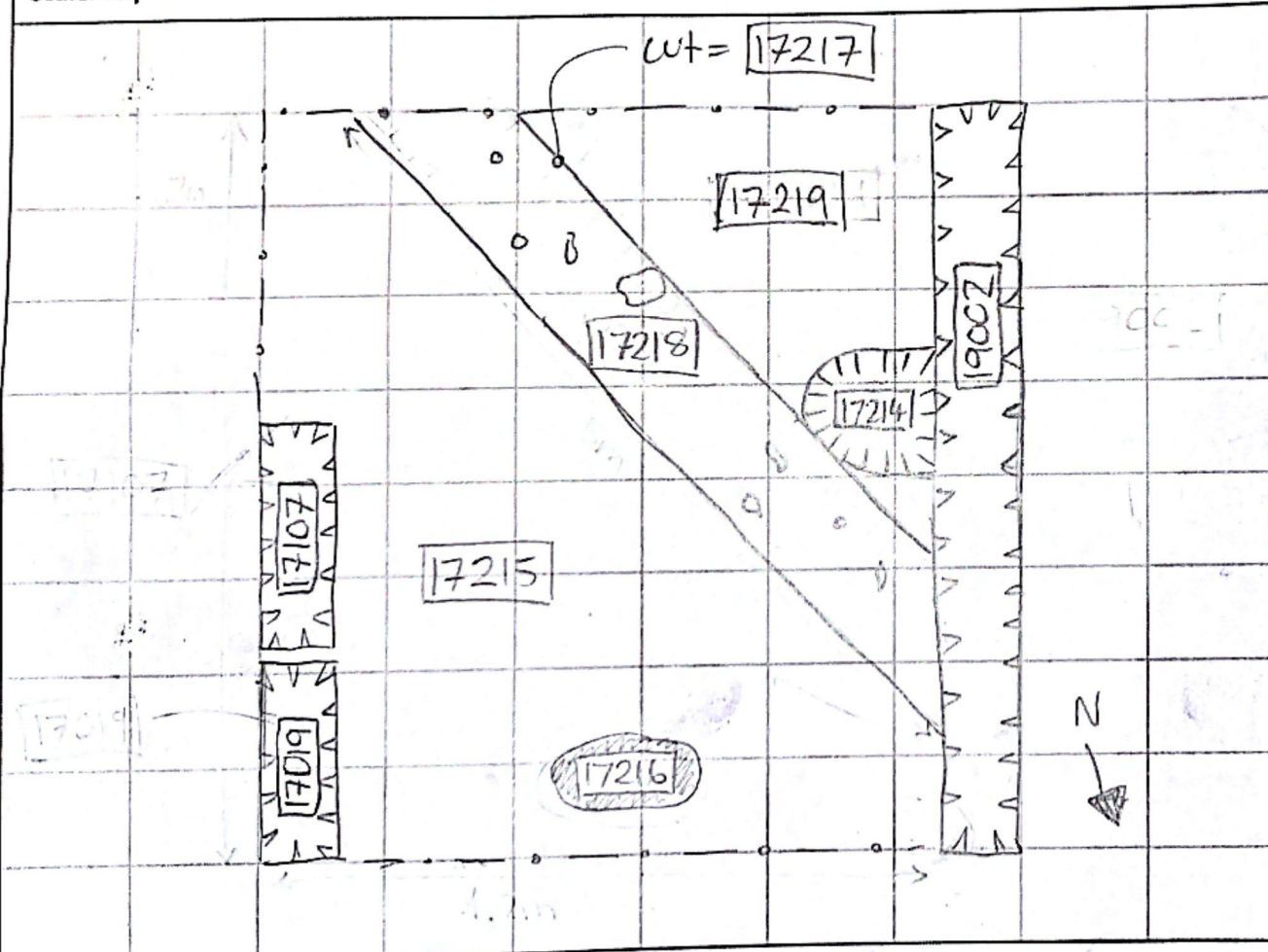
Date: 15th July 2022

Initials: LN

Definition: Fill in cut 17217

Sketch of Plan: Include: 1. north arrow; 2. dimensions; 3. location of samples (if taken); 4. trench pts (if visible in plan); 5. slope (if relevant); 6. abutting architecture/adjacent or relevant features for reference; 7. numbers of all SUs visible in plan

Scale: 1sq =



Notes:

- 17218 comprises the fill in cut 17217.
- contains some construction material (bricks, tiles, nails) and a little pottery (very few sherds)
- has produced several bronze fragments.

Date Uploaded to Database:

Initial: