

SITE CODE:

MZ

SU N°:

23010

MARZUOLO
ARCHAEOLOGICAL
PROJECT



AREA N°:

23000

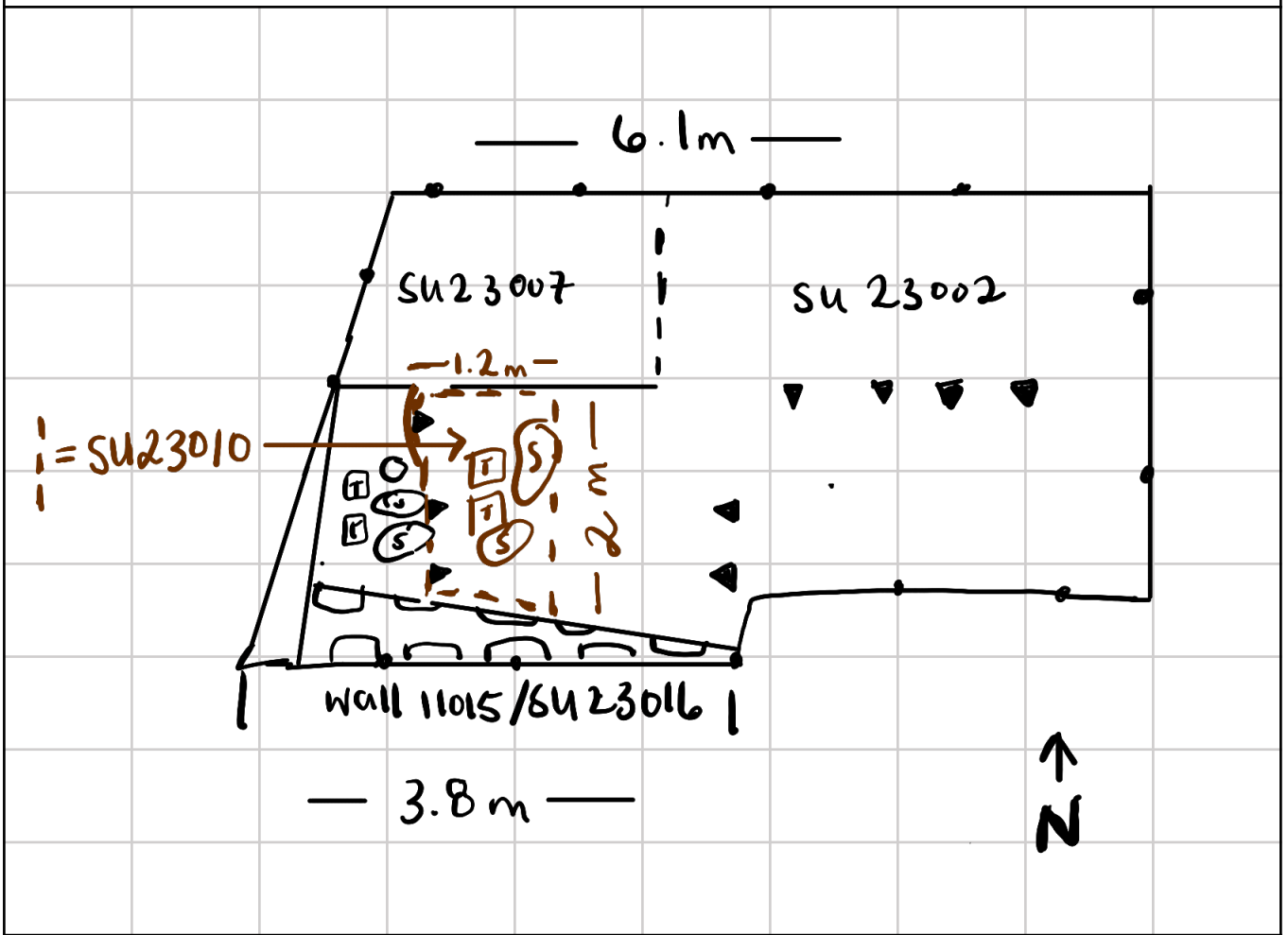
Date: 9 July 2024

Initials: JP

Definition: Tile collapse (or fill?) with loose brown soil

Sketch of Plan: Include: 1. north arrow; 2. dimensions; 3. location of samples (if taken); 4. trench pts (if visible in plan); 5. slope (if relevant); 6. abutting architecture/adjacent or relevant features for reference; 7. numbers of all SUs visible in plan

Scale: 1sq = 1m



Notes:
Possibly collapse or deposited fill (no obvious cut visible). Covers SU 23008. Heavy root activity. One large worked stone removed.

Plan checked by staff/director: JP (initials)

Plan uploaded to database: _____ (initials)