

SITE CODE:

MZ

SU N°:

10162

MARZUOLO
ARCHAEOLOGICAL
PROJECT



AREA N°:

AR 10000

TR 02

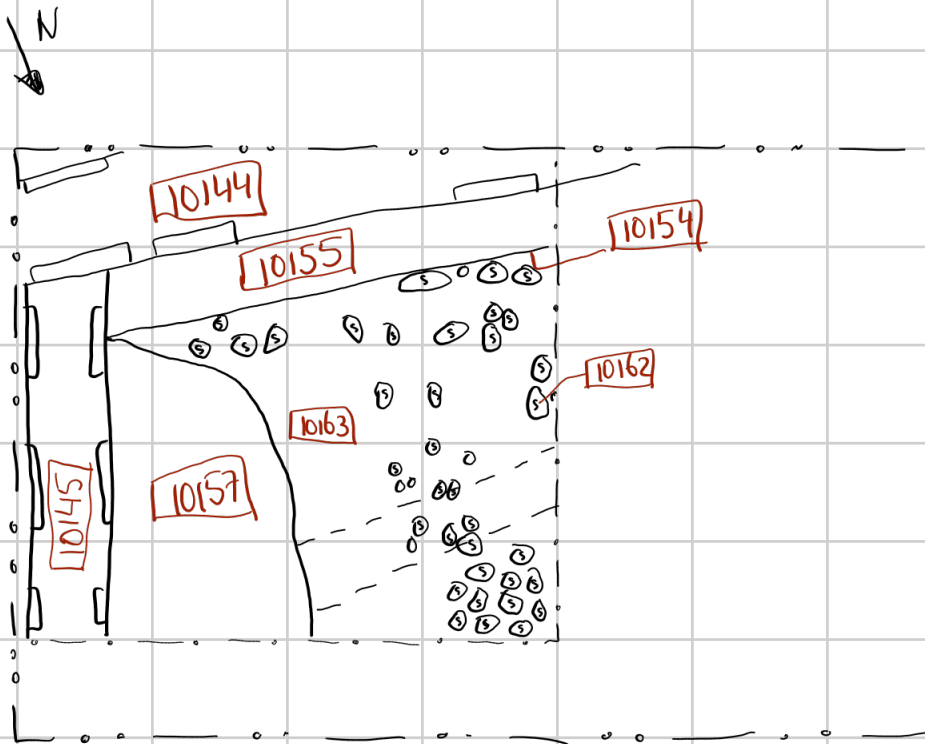
Date: July 18

Initials: EVS

Definition: Dispersed stones on top of charcoal layer (10163)

Sketch of Plan: Include: 1. north arrow; 2. dimensions; 3. location of samples (if taken); 4. trench pts (if visible in plan); 5. slope (if relevant); 6. abutting architecture/adjacent or relevant features for reference; 7. numbers of all SUs visible in plan

Scale: 1sq =



Notes:

Plan checked by staff/director: T.K (initials)

Plan uploaded to database: EVS (initials)



Cornell University

Radboud University



UNIVERSITY OF
ARKANSAS

THE UNIVERSITY OF
MELBOURNE